



# TOWN OF GREENVILLE COMPREHENSIVE PLAN

Prepared by the East Central Wisconsin  
Regional Planning Commission

November 2007

## Key Dates:

**Dec. 18, 2007:**  
4<sup>th</sup> Comprehensive  
Plan Steering  
Committee  
Meeting. 5:30 –  
7:30 PM. Town  
Hall.

**Jan. 29, 2008:**  
2<sup>nd</sup> Community -  
Wide Planning  
Session.  
6:00 – 8:00 PM,  
Presentation at  
6:30 PM. Town  
Hall.

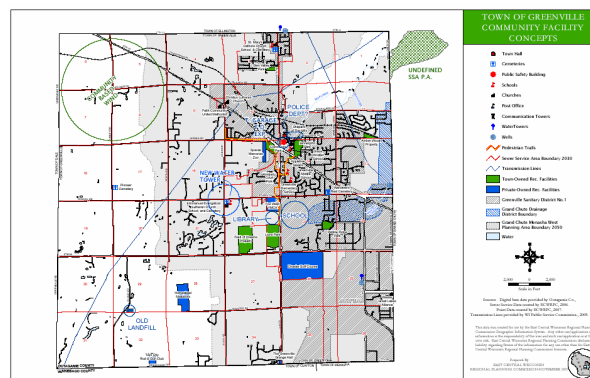
## PLANNING PROCESS OVERVIEW

The Town's Comprehensive Plan planning process consists of seven broad steps. Beginning in fall of 2006, the Town, in cooperation with planning staff at East Central Wisconsin Regional Planning Commission, began the process and has made progress towards completing the plan in a timely manner. Below is a generalized timeline illustrating the status of the plan.

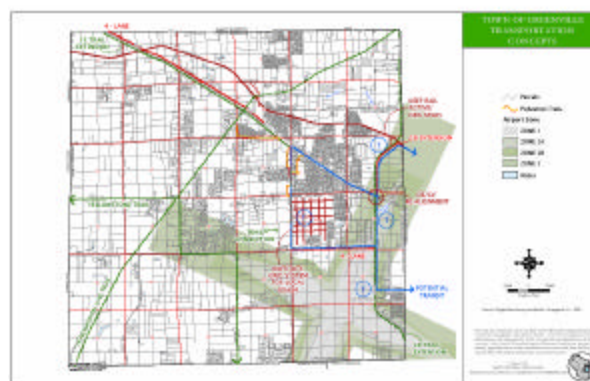
### PLAN TIMELINE

1. Develop & Review Background Info.
2. Develop Vision Statements
3. **Develop & Select Preferred Future Land Use Alternative & Associated Goals**
4. Develop Objectives & Strategies for Implementation
5. Determine needs for Intergovernmental Cooperation
6. Review Draft Plan
7. Adopt Final Plan

Great strides have been made in developing Greenville's new Comprehensive Plan, but there is much more to be done. Participation from the community plays a critical role in creating the plan. Please take the time to participate! Several input options are described in this newsletter.



**PLAN STATUS  
(FALL 2007)**



See these and other maps on the project website:  
[www.eastcentralrpc.org/plangreenville](http://www.eastcentralrpc.org/plangreenville)

## TOWN-WIDE PLANNING SESSION SCHEDULED

The second Town-wide planning session is planned for **Tuesday, January 29, 2008, 6:00 PM – 8:00 PM at the Greenville Town Hall**. The session is designed to allow the community to drop by at any time during the two-hour session. East Central Planning Staff will be giving a formal presentation on the planning process and preliminary results at 6:30 PM.

The intent of this meeting will be to provide the community with an opportunity to select a preferred land use scenario (alternatives are being created

**What?** TOWN-WIDE PLANNING SESSION  
**When?** JANUARY 29, 2008; 6 – 8 PM, PRESENTATION AT 6:30 PM.  
**Where?** GREENVILLE TOWN HALL (W6860 PARKVIEW DRIVE)

## ADDITIONAL COMMUNITY PARTICIPATION OPPORTUNITIES

The planning process is designed to collect as much community input as possible. Input has and will continue to be gathered through the Town-wide planning sessions, the Greenville Comprehensive Plan Steering Committee (a group of Town officials and citizens), and through the project website. The project website is available at <http://www.eastcentralrpc.org/plangreenville>. The site provides an overview of the project schedule, planning process, and provides continual updates on the progress of the Steering Committee. You can also provide input by contact Kara Homan, Project Planner (see bottom of page for contact information).



*The project website can be used to learn more about the Comprehensive Plan's planning process, or to send us your input via the "comments" tool.*

## RESULTS FROM THE JANUARY, 2007 TOWN-WIDE VISIONING SESSION

On January 16, 2007, the planning process began with the inaugural community-wide meeting. At the meeting, participants were asked to discuss what aspects of the community they valued and what they felt were issues the community should address.

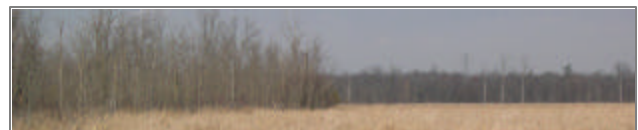
Overall, participants at the first meeting felt that the following added value to the community:

- Farmland/Agriculture
- Location (proximity to employment/shopping)
- Open Natural Areas/Green Spaces/Park Land
- Sense of Community
- Outagamie County Regional Airport

Participants felt the following items were of concern for the Town of Greenville:

- Properly Planned Subdivisions (access, potable water supply, sewage disposal, open space)
- Rate of Growth is too High
- Need to Plan Growth
- Protection of Surface and Ground Water
- Need for Additional Services (police and fire)

The project website contains more detailed results from the community-wide visioning session.



### Contact us!

Kara Homan, Associate Planner  
 East Central Wisconsin Regional Planning Commission  
 132 Main Street | Menasha, WI 54952  
 Phone – 920.751.4770 | Fax – 920.751.4771  
 E-mail address - [khoman@eastcentralrpc.org](mailto:khoman@eastcentralrpc.org)

### We are on the Web!

Visit us at:  
[www.eastcentralrpc.org/plangreenville](http://www.eastcentralrpc.org/plangreenville)