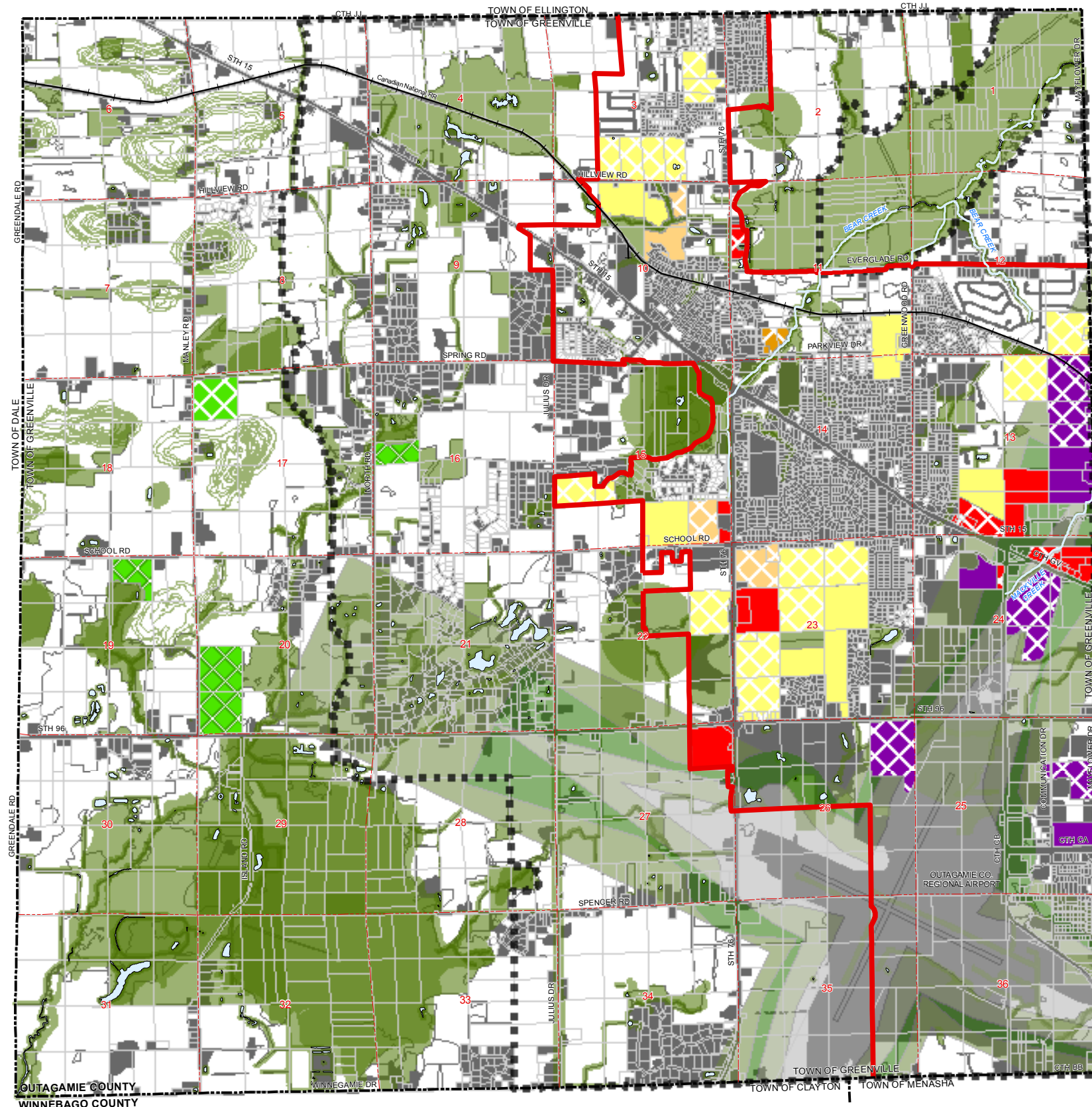
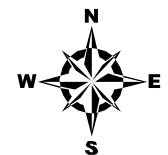
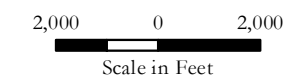


TOWN OF GREENVILLE CURRENT TRENDS SCENARIO



- Sewer Service Area Boundary 2030
- Grand Chute Menasha West Planning Area Boundary 2050
- Parcels
- High Growth Commercial
- Low Growth Commercial
- High Growth Industrial
- Low Growth Industrial
- High Growth High Density Residential
- Low Growth High Density Residential
- High Growth Medium Density Residential
- Low Growth Medium Density Residential
- High Growth Low Density Residential
- Low Growth Low Density Residential
- High Growth Conservation Subdivision
- Low Growth Conservation Subdivision
- Features of HIGH Importance
- Airport Zone**
 - ZONE 1
 - ZONE 2A
 - ZONE 2B
 - ZONE 3
- Existing Landuse**
 - Developed
 - Undeveloped



Source: Digital base data provided by Outagamie Co., 2007.
"Features of Importance" data from Greenville Greenprint Plan, 2004.

This data was created for use by the East Central Wisconsin Regional Planning Commission Geographic Information System. Any other use/application of this information is the responsibility of the user and such use/application is at their own risk. East Central Wisconsin Regional Planning Commission disclaims all liability regarding fitness of the information for any use other than for East Central Wisconsin Regional Planning Commission business.

Prepared By
EAST CENTRAL WISCONSIN
REGIONAL PLANNING COMMISSION-DECEMBER 2007

