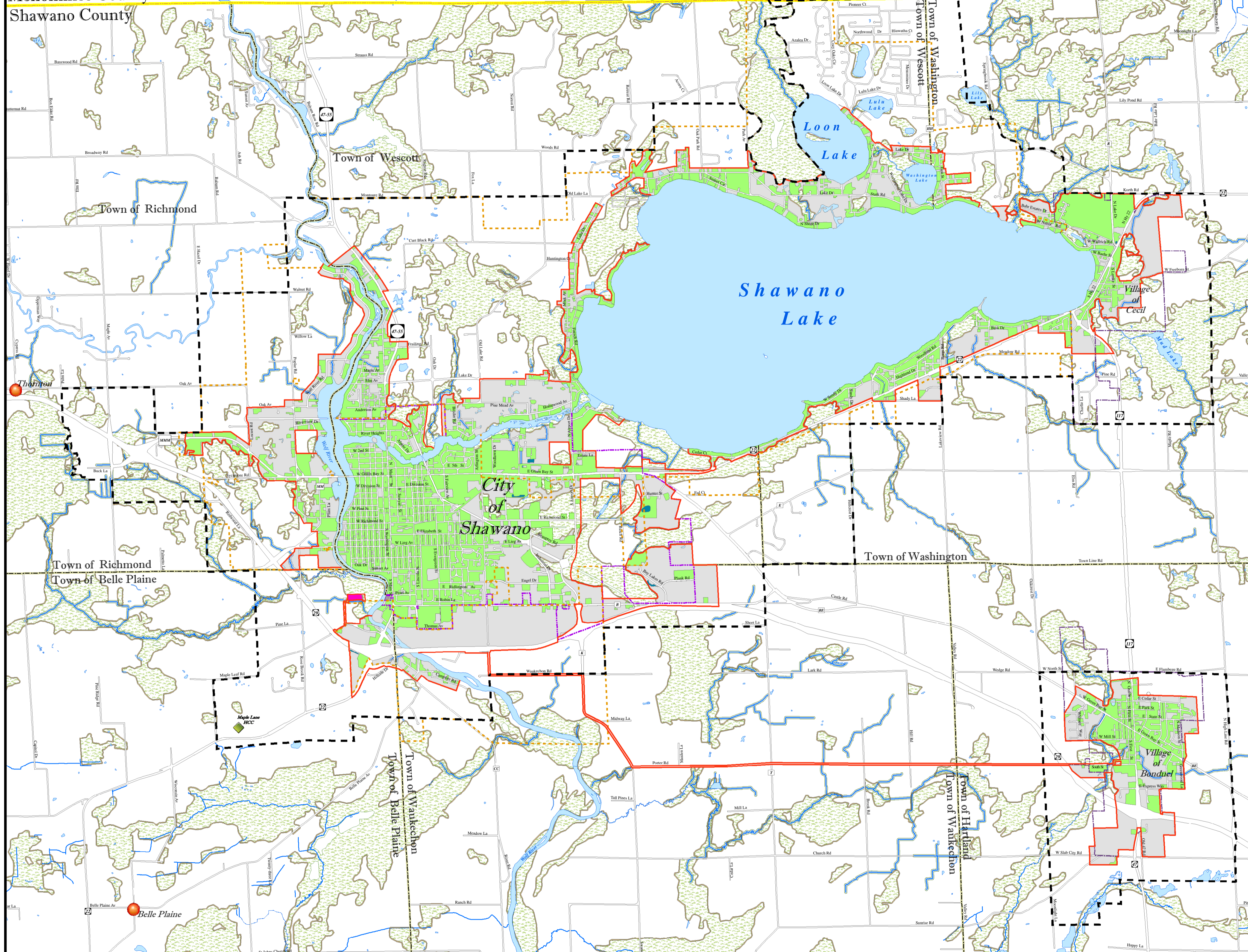


Menominee County
Shawano County



2030 SHAWANO LAKE SEWER SERVICE AREA

2030 SEWER SERVICE AREA

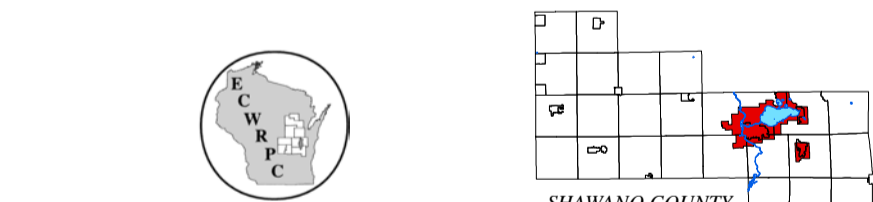
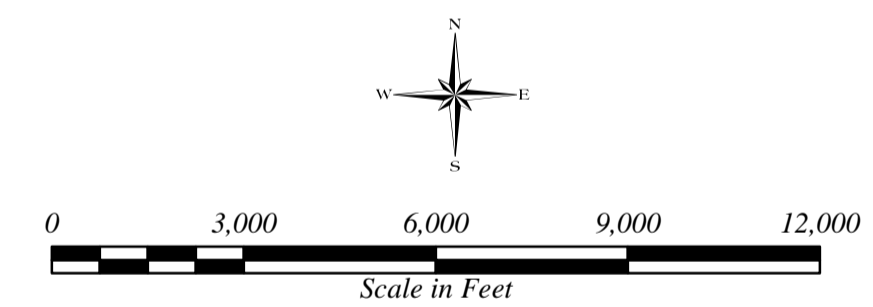
- 2030 Sewer Service Area Boundary
- 2050 Planning Area Boundary
- Sanitary District Boundary
- Developed Areas Within 2030 SSA
- Undeveloped Areas Within 2030 SSA
- Stormwater Detention Facilities
- Wastewater Treatment Facility

MINOR CIVIL DIVISIONS

- City Corporate Limits
- Village Corporate Limits
- Township Boundary
- County Boundary
- Unincorporated Places

2030 ENVIRONMENTAL CONDITIONS

- WDNR Designated Wetlands
- 50 Foot Wetland Buffer
- 75 Foot Stream Buffer
- ~ Streams



Prepared By
EAST CENTRAL WISCONSIN
REGIONAL PLANNING COMMISSION - MARCH, 2011

This map and its associated sewer service area descriptions do not obligate a community(ies) to provide sewer service to property owners contained herein.

This data was created for use by the East Central Wisconsin Regional Planning Commission Geographic Information System. Any other use/application of this information is the responsibility of the user and such use/application is at their own risk. East Central Wisconsin Regional Planning Commission disclaims all liability regarding fitness of the information for any use other than for East Central Wisconsin Regional Planning Commission business.

Source: Digital base data provided by Shawano County, Wisconsin Department of Natural Resources. Thematic data created by ECRWPC.

MAP AMENDMENTS		
Designated Management Agency	Date of WDNR Approval	Track No.