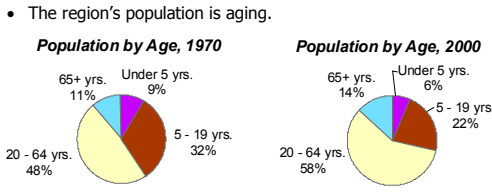
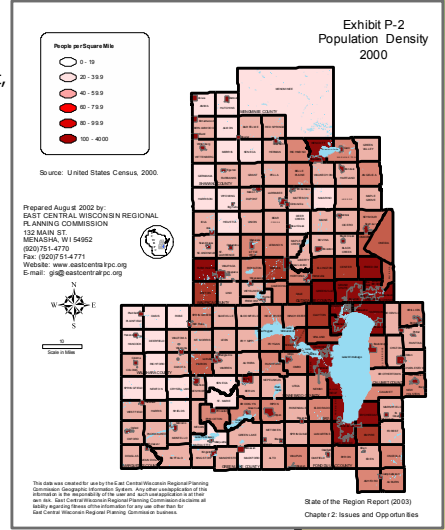
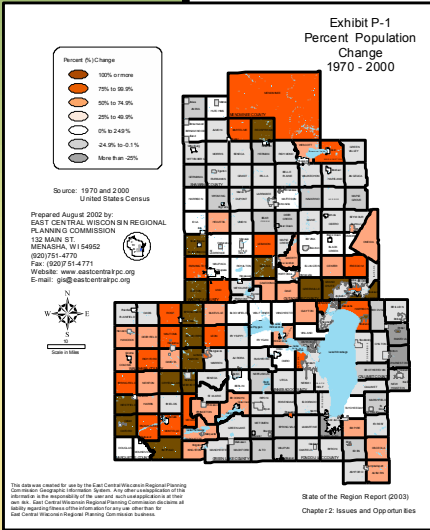


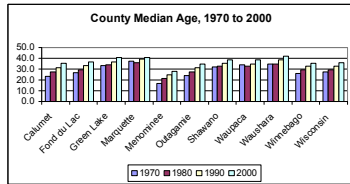
Major Findings 1:

Current Trends:

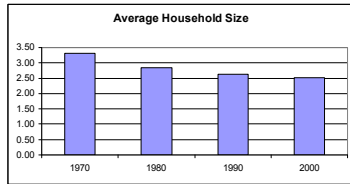
- The region's population grew by 29% between 1970 and 2000.
- 70% of that growth occurred in the four urban counties: Calumet, Fond du Lac, Outagamie and Winnebago, which have the largest populations and highest population densities in the region (See map on right).
- Growth in the remainder of the region varied (See map on left).
- Although the non-white population grew from 6,000 to 33,000 between 1970 and 2000, whites still comprise 94.6% of the region's population.



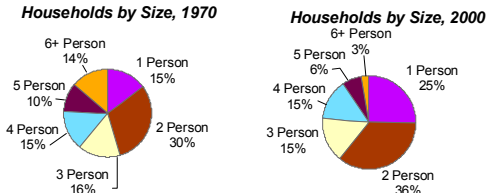
- The region's population is aging.
- Menominee County has the youngest population in the region.
- The remaining rural counties in the region have older populations than the urban counties and the state.



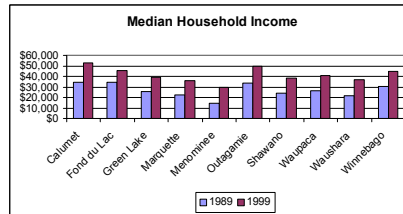
- Between 1990 and 2000, the region lost population in the 20 to 30 age cohort. The largest losses occurred in rural counties.
- Household size is decreasing.



- Between 1970 and 2000, the share of one-person households in the region increased from 15% of all households to 25% of all households in the region.



- All counties in the region experienced an increase in median household income between 1989 and 1999. However, the income gap between urban and rural counties increased.

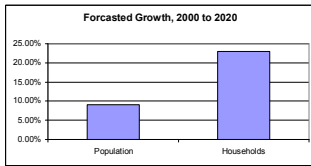


- Rural county residents were also more likely to live in poverty than urban county residents.

Major Findings 2:

Future Trends:

- The number of households in the region is expected to increase at a faster rate than the population.

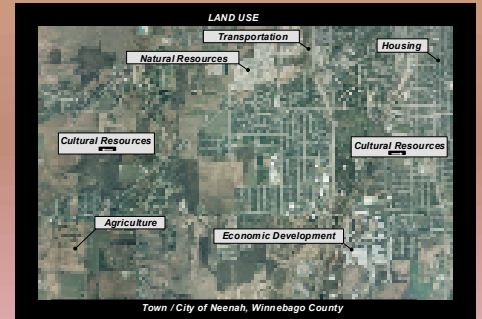


- Due to the aging of the baby boom generation and the region's ability to attract retirees, it is anticipated that the elderly population may double during the planning period.
- The region's population will likely become more diverse, as minority groups have a larger share of their population in the prime child bearing years than the white population.

Regional Issues:

How do we?

- Accommodate the increased demand for services and land resulting from continued population and household growth?
- Promote recognition of the relationship between density and proximity of settlement and cost of services and land consumption?
- Protect the vitality of the agricultural and forestry sectors in the context of decreasing open space?
- Address conflicts between urban growth and traditional rural economies?
- Promote a healthy, vibrant economy and quality of life for all residents?



What's Next?

The issues identified in this chapter will be addressed in the context of the remaining plan elements: economic development, housing, transportation, community and public facilities, agricultural resources, natural resources, cultural resources and land use.